

ConnectON Asset Mapping News

Winter 2023

2022 was an exciting year of growth for **ConnectON**! Through new and renewed partnerships, we have expanded the asset list, improved the resources offered in the tool and have embarked on the next phase of growth which included better analytics and a public facing dashboard. There is an ever-growing list of examples where **ConnectON** has supported a range of initiatives. How will you use **ConnectON** in 2023?

"**ConnectON** data has been useful in a number of applications. Use of **ConnectON** data includes but is not limited to:

- Supporting and verifying completeness of Agricultural Impact Assessments for farms and support businesses
- Analysing assets and their supporting businesses and locations, which are often clustered in the region
- Determining competitive factors that may assist in attracting business to the region and providing a provincial perspective
- Going forward, the data will be instrumental in identifying trends occurring provincially, municipally, and locally."

- **Anna DeMarchi Meyers, Agricultural Liaison Officer, Planning Services, Halton Region**

Much has been accomplished — here is what you need to know!

2022 Project Highlights

Bio-digester Project: University of Waterloo

ConnectON data is being used regionally and provincially to support research by the University of Waterloo on the potential for community-based bio-digesters. The overall goal of the project is to evaluate the feasibility of widespread use of bio-digesters to improve water quality and reduce greenhouse gas emissions from a technological, economic and policy perspective.

ConnectON data is providing key inputs on livestock farms and potential food waste sources (e.g., food processing plants, dairy product manufacturing plants, etc.) The data will help identify potential regions in the province where bio-digesters have favorable financial conditions and provide environmental benefits. The research is currently underway. Stay tuned – your municipality may be identified as a potential location!

OMAFRA Food and Beverages Data added to ConnectON.

Through our partnership with **OMAFRA**, new assets were added to the **ConnectON** map primarily focused on Food and Beverage processing and handling. This included mapping agri-food and manufacturing assets for the entire province with 2,152 new assets being added and 530 assets being updated with data collected in 2022. All users across the province will now have access to these newly added assets. Sign into the tool and check out what new assets have been added to your area!

Data Refresh: Windsor - Essex

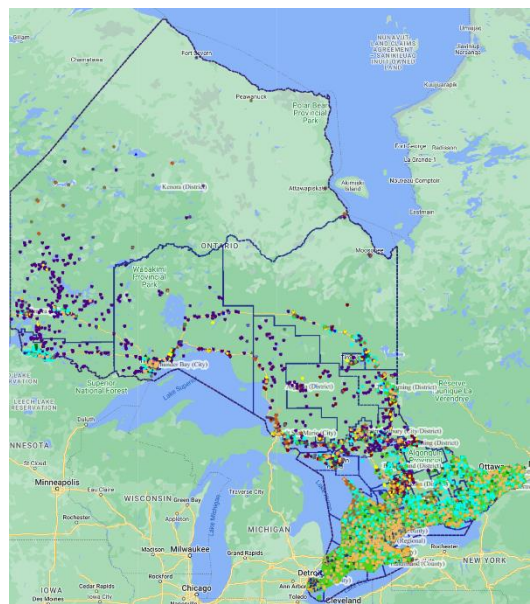
Keeping the data current and up to date is important for maintaining data quality and providing value to our users. Through 2022, the **ConnectON** team has worked in collaboration with our partners to refresh key data sources that are found in **ConnectON**. In collaboration with Invest Windsor Essex, 550 assets were updated with 280 for the city of Windsor and 270 for the County of Essex.

Please contact Ahmad Sukhera at asukhera@foodandfarming.ca to get started on your data refresh!

2022 Overview

2022 was a year of growth and expansion for **ConnectON**! First, we would like to introduce **Ahmad Sukhera** who has taken over as the **Project Manager** for the ConnectON program from Nicole Winter. We are glad to have him join our team and look forward to benefiting from his knowledge and experience. Ahmad can be reached at asukhera@foodandfarming.ca for any queries related to ConnectON!

Crucial changes have taken place in the platform to improve its performance and security with added redundancy for storing the database to improve recovery and security. Several system enhancements were made and work has started to launch the next phase of the ConnectON tool which will include the much awaited analytics and export functions. **ConnectON** has expanded and now includes **31 regional areas** and **77 municipal areas** along with **302 users** across the province with **41 new users** being added in 2022. Between the data refreshes for existing partners and new projects we now have **120,060 assets** mapped across all three sectors. Through our continued partnerships and collaborations ConnectON is always growing and looking forward to adding more assets in the coming year.



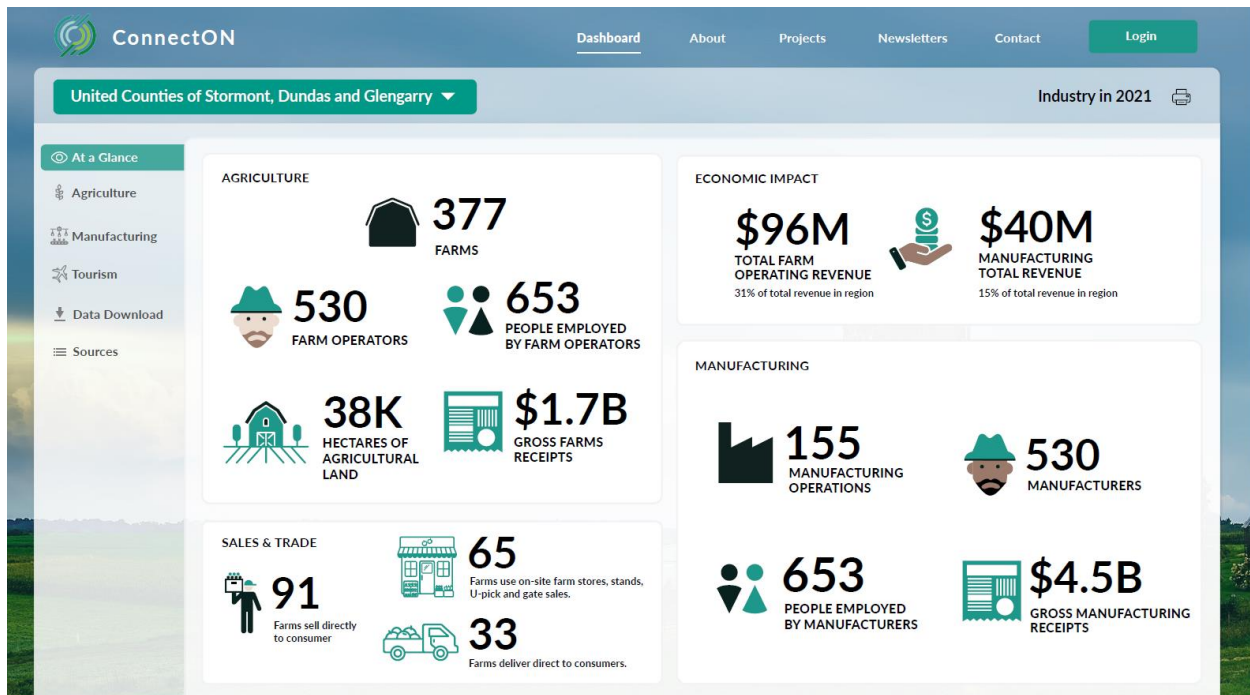
Upcoming Projects

Public-facing Dashboard

In our ongoing efforts to provide more value to our users, **ConnectON** has embarked on its next phase of development which includes a free to use public-facing dashboard. This dashboard will be more user-friendly and visually appealing and will provide quick and easily accessible data of benefit to stakeholders in the region.

Upon completion, the **ConnectON** dashboard will give users an overview of statistics pertaining to agricultural, manufacturing and tourism industries within their municipality and the region. By doing so, municipalities will be able to quantitatively understand as well as compare the value of different industries within a region; this can play a crucial role in identifying investment potential and value.

The dashboard will also include the ability for users to embed the data onto their own website and export it as an infographic for their use. We are currently working hard to release the initial dashboard by mid-year, which we will keep improving based on feedback from users. Below you can find a glimpse of what our dashboard will look like:



EDCO Conference

This year, the **ConnectON** team will be participating in the 66th Annual Economic Development Council of Ontario Conference from 7th to 9th February 2023. Considering the conference theme, Transformation, we will be presenting the ongoing work of the **ConnectON** Dashboard and building connections with Economic Development Communities to facilitate different endeavours that are being taken around the province. It is only through building more partnerships that **ConnectON** can continue to grow!

New Resources

User Guide and Video Tutorials

In our continued efforts to make the tool easier to use the **ConnectON** User Guide has been updated to reflect the system enhancements that have been made in the platform. Video tutorials have been added that highlight the different features of the tool and how they can be used for maximum effect. Be sure to check out the video tutorials on how to use the various features and tools in the ConnectON platform, see Appendix D: Additional Resources in the User Guide or click the links below:

- Introduction to ConnectON: <https://youtu.be/jwLNBxgzSyk>
- Tour of ConnectON Tool: <https://youtu.be/OKDD8KFKXzs>
- Infrastructure Overlays and Base Maps: https://youtu.be/WHyJO_NUrm8
- Navigating the Toolbar: <https://youtu.be/Ya3QaIUB6LE>
- Navigating the Toolbox: <https://www.youtube.com/watch?v=PbAkWseC7g>

ConnectON User Training

The ConnectON team held two training sessions with existing and new users of the Western Ontario Wardens Caucus region in November, with great response and turnout. Virtual training and walk throughs are planned over the coming year and can also be requested for your organisation or for your personal need if required. The regular trainings are open to all users. Watch for more information on timing, topics and how to sign up.

ConnectON Website

A reminder that access to the login screen and mapping system can be found at connecton.ca. If in need of assistance with your login information, contact at support@connecton.ca. Please make sure that as per the Data Sharing Agreement (DSA) login credentials and access is restricted to the user issued the login details. This ensures that the DSA is followed and aids in our ongoing process of improving user analytics and user experience.

The site is a great resource to provide program background and information and is regularly updated with added resources and user examples. Be sure to check it out for information and ideas!

Contact Information

For help or further information please contact:

Tayler Black, Data Manager at support@connecton.ca

Marilyn Bidgood, Project Liaison at info@connecton.ca

Ahmad Bilal Sukhera, Project Manager at asukhera@foodandfarming.ca